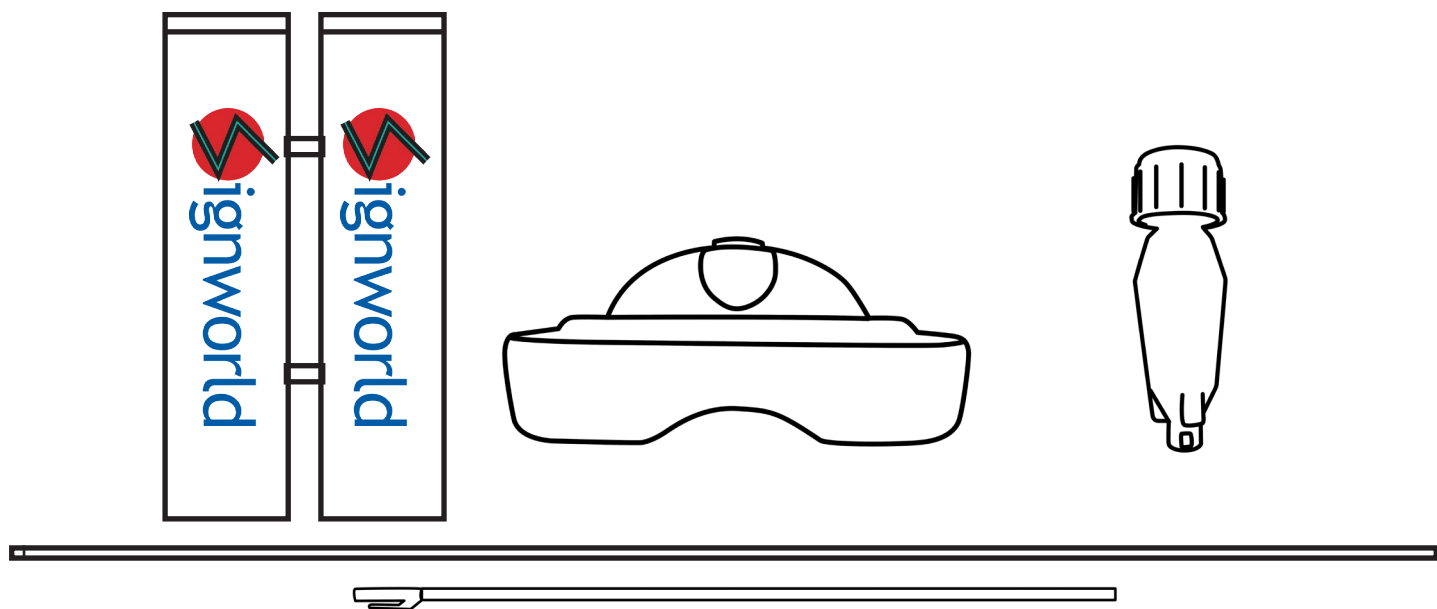


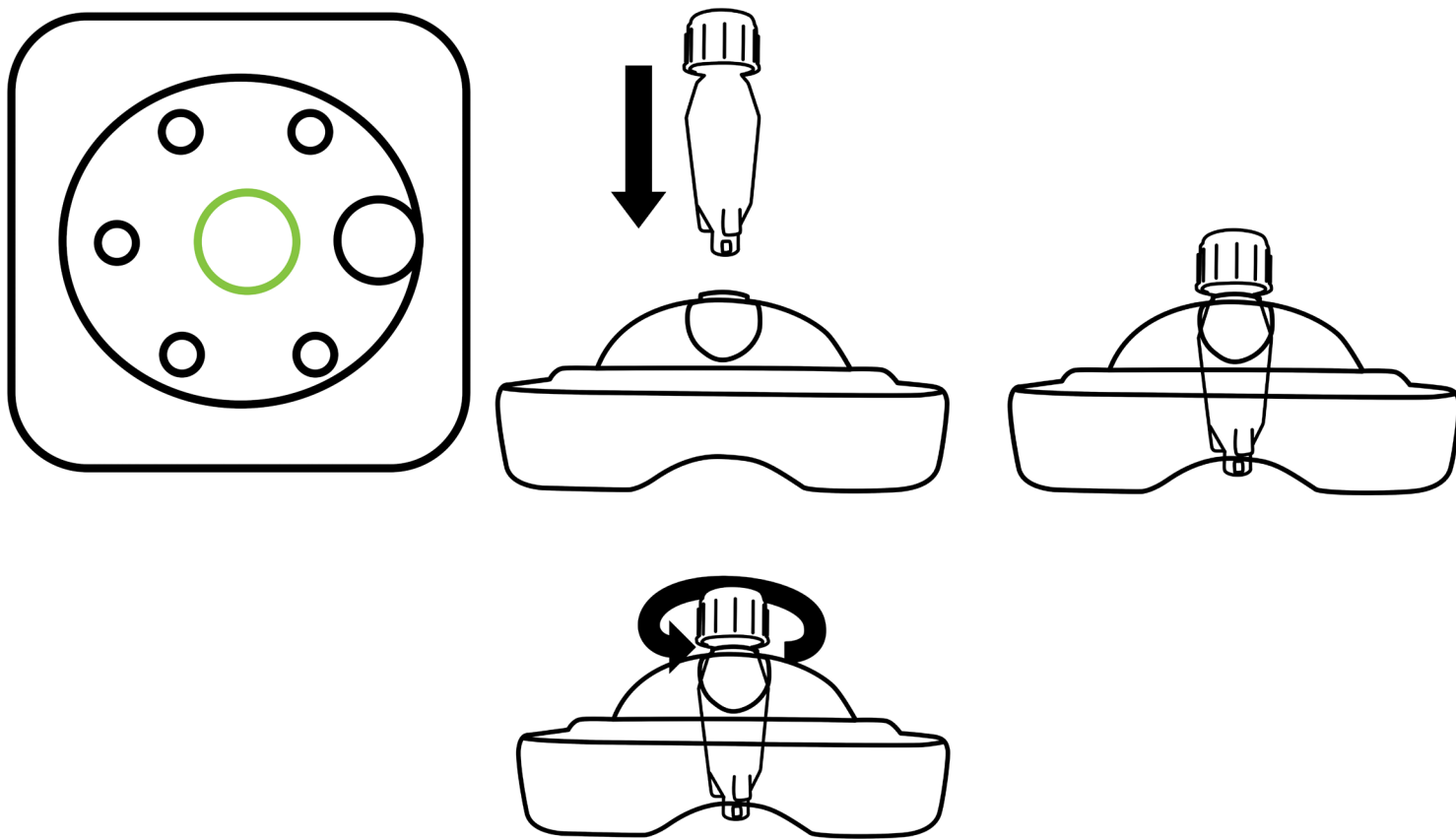
# FLG02 HARDWARE SET-UP GUIDE

1

Remove all components from the box.

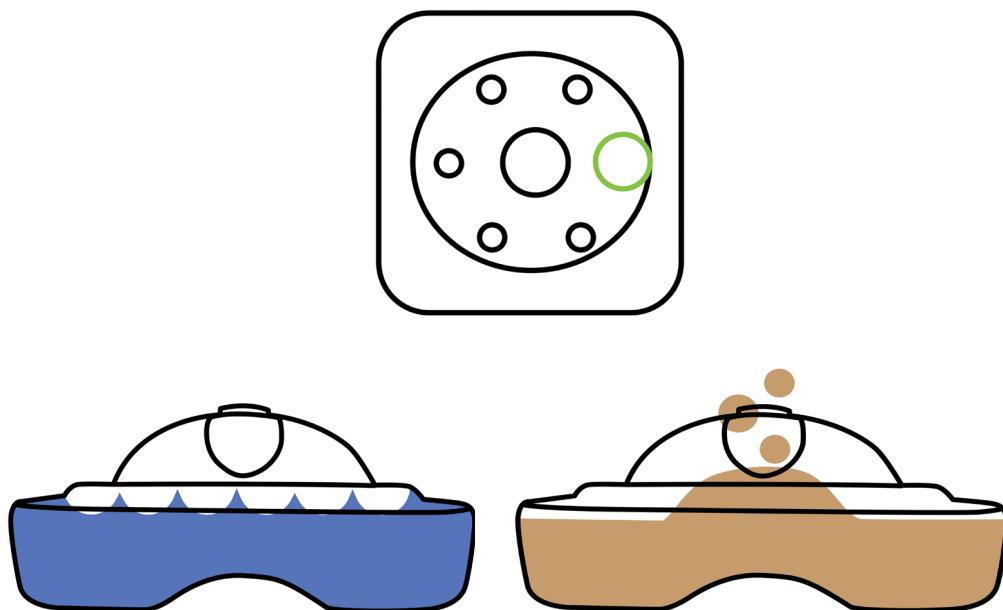


Set the base down on the floor. Insert the “plug” into the base as shown.

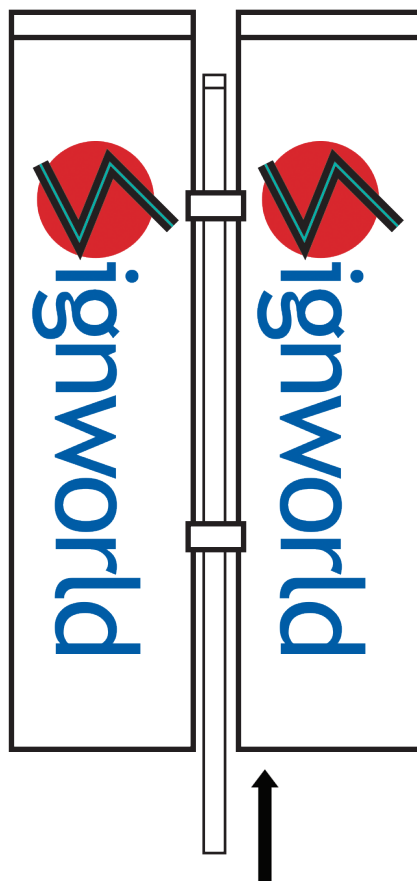


Turn the plug counter-clockwise to lock it in place.

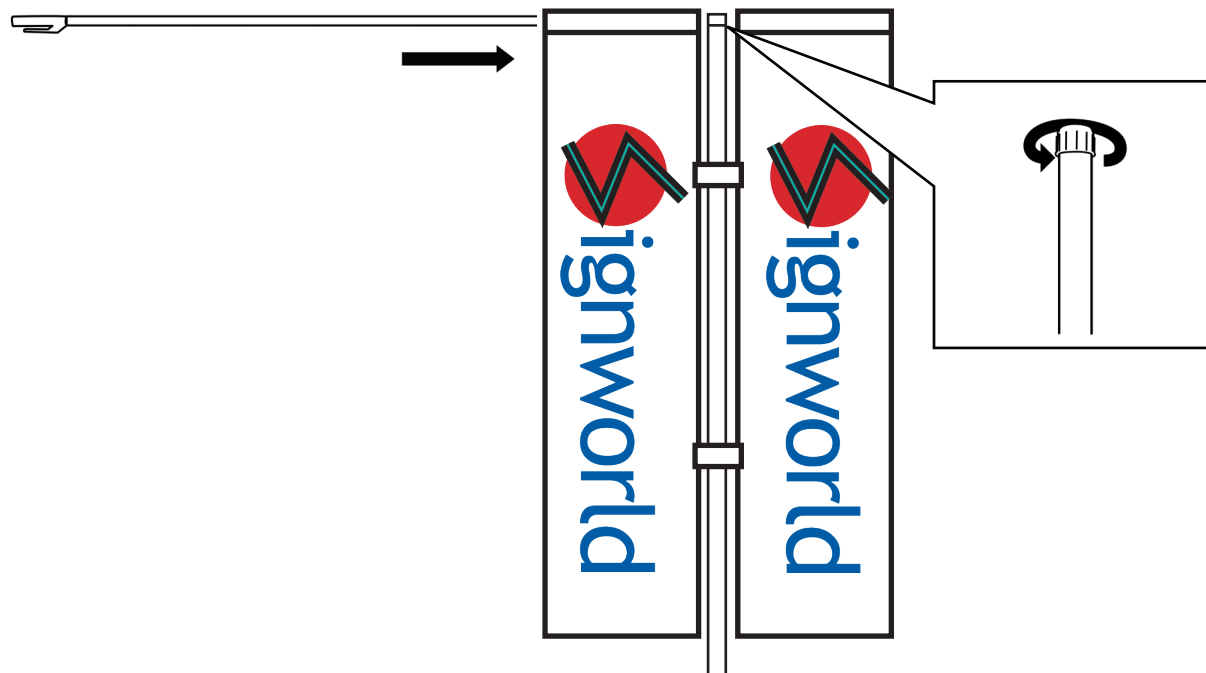
Fill the base with your choice of either water or sand for weight.



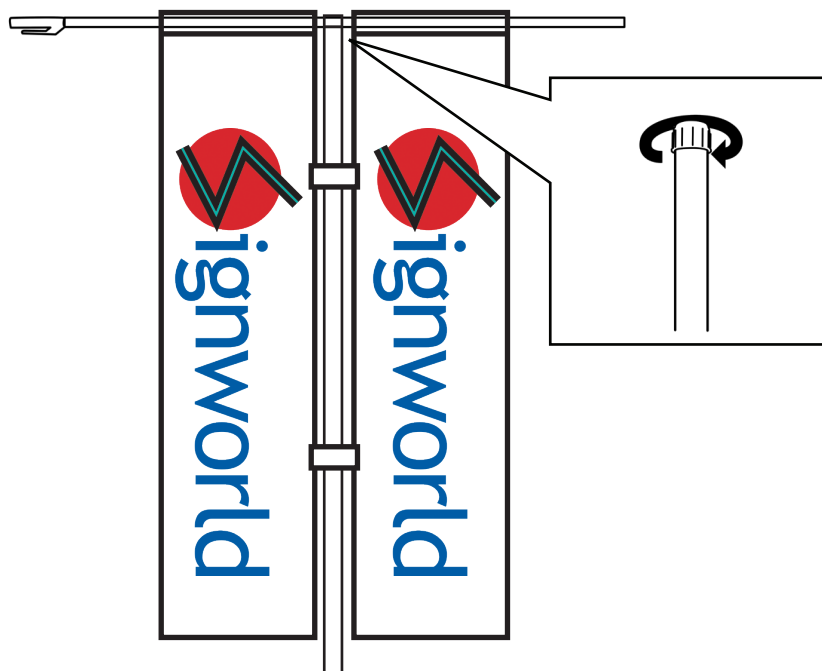
Take the central flag pole and run it through the fabric strips holding the two sides of the flag together, from the bottom up.



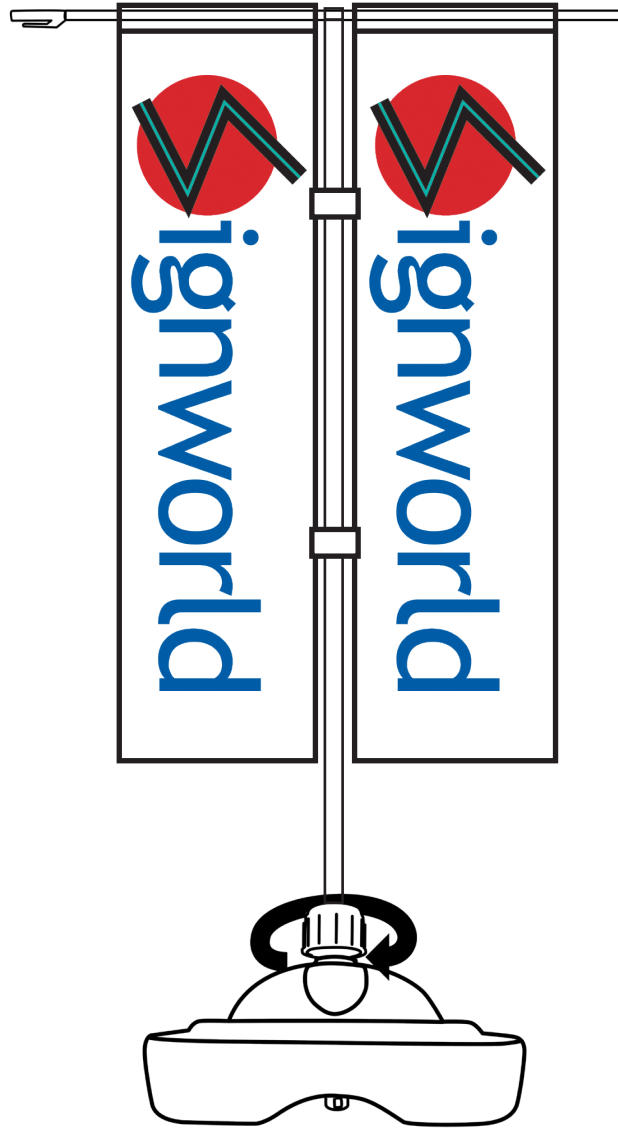
Run the flat bar through the left side of the flag first, pulling the flag all the way to the end. Then, Unscrew the top cap on the central flag pole so that you can run the flat top bar through the hole near the top.



Run the flat bar through the right side of the flag. Tighten the screw cap so that the flat bar is held securely.



Unscrew the top portion of the plug just enough to insert the flag pole.  
Tighten the plug so that the pole is held securely.



Your new flag is ready for display!